

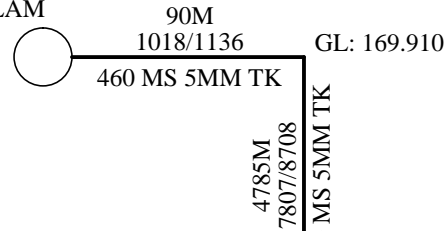
MELUR CWSS  
MADURAI EAST UNION - INTERMEDIATE SUMP  
AT VELLIANKUNDRAM-PM-2

ECP : 84

INTERMEDIATE SUMP

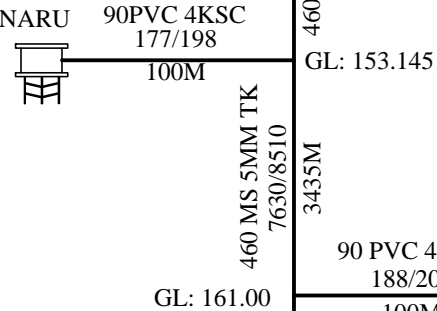
AT VELLIANKULAM

CAP : 6.0 LL  
 GL : 169.39M  
 FVL : 167.89M  
 MWL : 171.89M



SUMP AT KATHAIKINARU

CAP : 0.1 LL  
 GL : 153.49M  
 FVL : 151.99M  
 MWL : 154.99M



90 PVC 4KSC  
 188/208  
 100M

GL: 161.00

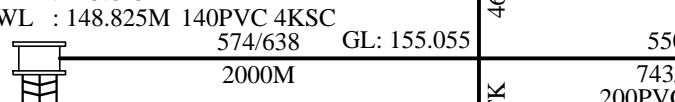
SUMP AT NARASINGAM

CAP : 0.3 LL  
 GL : 161.31M  
 FVL : 159.81M  
 MWL : 162.81M



SUMP @ UTHANGUDI

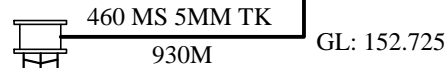
CAP : 0.60 LL  
 GL : 147.325M  
 FVL : 145.825M  
 MWL : 148.825M



INTERMEDIATE SUMP

AT RAJAKAMBEERAM

CAP : 4.00 LL  
 GL : 152.635M  
 FVL : 151.135M  
 MWL : 154.635M



SUMP AT OTHAKADAI

CAP : 0.6 LL  
 GL : 152.35M  
 FVL : 150.85M  
 MWL : 153.85M

